



# 燕窝 — 滋补的顶级佳品

## NOURISHING LUXURY TONIC



燕窝，顾名思义即燕子筑的巢。然而这并不是说，普通屋檐下的燕巢就是燕窝。所谓燕窝，其实是一种特殊的雨燕科——金丝雨燕的窝。这些燕窝通常见于山洞里，或是人工搭建的燕屋上。只有这类属于雨燕科的燕窝才适合人们食用。

千百年来，燕窝一直被视为润肺及滋补养颜的顶级补品之一。中医认为燕窝有滋阴补肾、清热健脾、润肺养颜、延年益寿的功效。其不寒不燥的特性，无论任何季节，皆属于男女老幼的上等补品。

Bird's Nest literally refers to nests built by swallows. However, not all swallows' nests are considered bird's nest- only nests that are built by the golden swiflets. They are commonly found in caves and man-made houses. Only these species of bird's nest are suitable for human consumption.

Bird's nest has been considered a superior form of tonic for thousands of years. Traditional Chinese Medicine considers bird's nest to be beneficial to the various body organs and complexion. It is a neutral form of tonic and hence suitable for people of all ages.

### 关于福華燕窝

#### About Hockhua Bird's Nest

福華从印尼及马来西亚等地的优质产区进口20多种不同级别的燕窝，并且在西马拥有自己的燕屋，再配合现代科学的管理，培育出了一片片的优质燕窝。福華从原材料及生产销售控制成本，燕窝价格合理，深受欢迎。福華燕窝的定价方式遵照公平原则来划分，即价格低廉的燕窝，其质量相对较低；而价格高的，其质量、外观、营养价值亦相对较高。

Hockhua imports over 20 grades of superior bird's nest from Indonesia and Malaysia. It also owns man-made swiflet houses in West Malaysia. Under advance scientific management, these bird's nests are reared in man-made swallow houses which produce hygienic and highly-nutritious bird's nests. Hockhua grades the bird's nests according to their respective qualities and provides a wide range of prices to consumers.



## 为什么燕窝分为“白窝”、“黑窝”？

Why are Bird's Nests classified as 'White Nest' & 'Black Nest'?

金丝燕可分为两个燕种：黑窝雨燕和白窝雨燕。

黑窝雨燕多生长在山洞里，由于受山洞的自然环境影响，所含的杂质较多，影响到燕窝的清洁度。因而必须经过人工浸水泡开，经过除掉杂质的过程，之后再重新组合成饼状，生产出的燕窝就是洞燕。

白窝雨燕主要生长在人造燕屋。由于相对洁净的筑巢环境，经过挑选后的屋燕，燕窝仍可保持完整的盏形，即燕盏，也就是我们所称的官燕。官燕又可分为龙牙官燕和金丝官燕。

由于洞燕与官燕的外形不一样，购买时需要注意其外部的几个特征：

- 选择官燕时，要注意它的燕条、燕头以及燕网；
- 选择洞燕时，除了要注意燕条，还要注意燕碎。

(请参阅以下洞燕和官燕的结构图)

There are two species of golden swiftlets- black-nest and white nest.

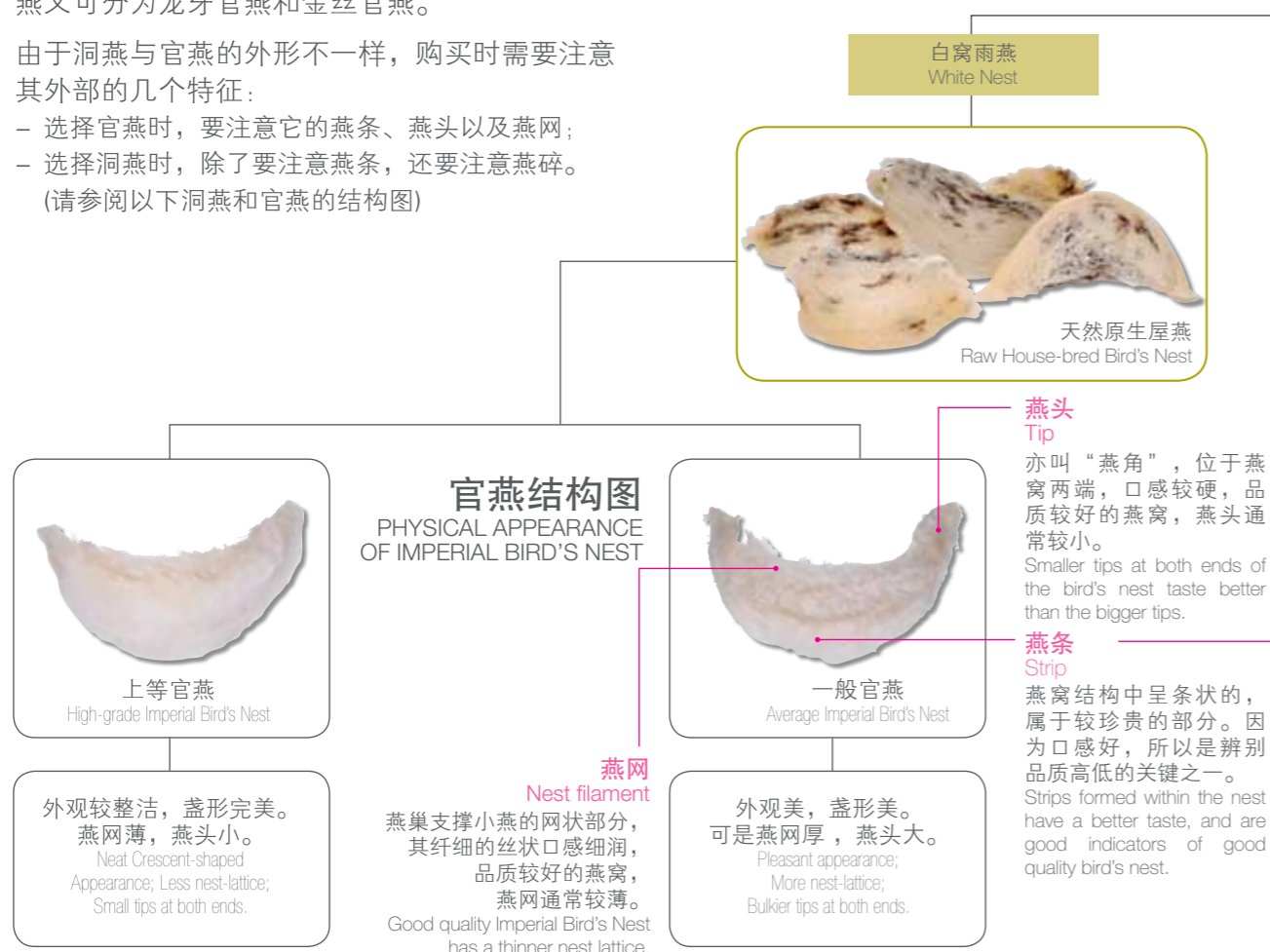
Black-nest swiftlets live in natural caves, hence the nests contain more impurities which must be removed by manual process. These bird's nests are called Cave Bird's Nest.

White-nest swiftlets live in man-made houses which enable the bird's nest to remain intact in shape. These are called Imperial Bird's Nest, which can be further classified as Longya Imperial Bird's Nest and Golden Bird's Nest.

When purchasing Imperial Bird's Nest, do take note of its strips, tips and nest filament. When purchasing Cave Bird's Nest, do take note of its strips and flakes. (Refer to diagram below)

### 燕窝分类一览表

### SUMMARY DIAGRAM

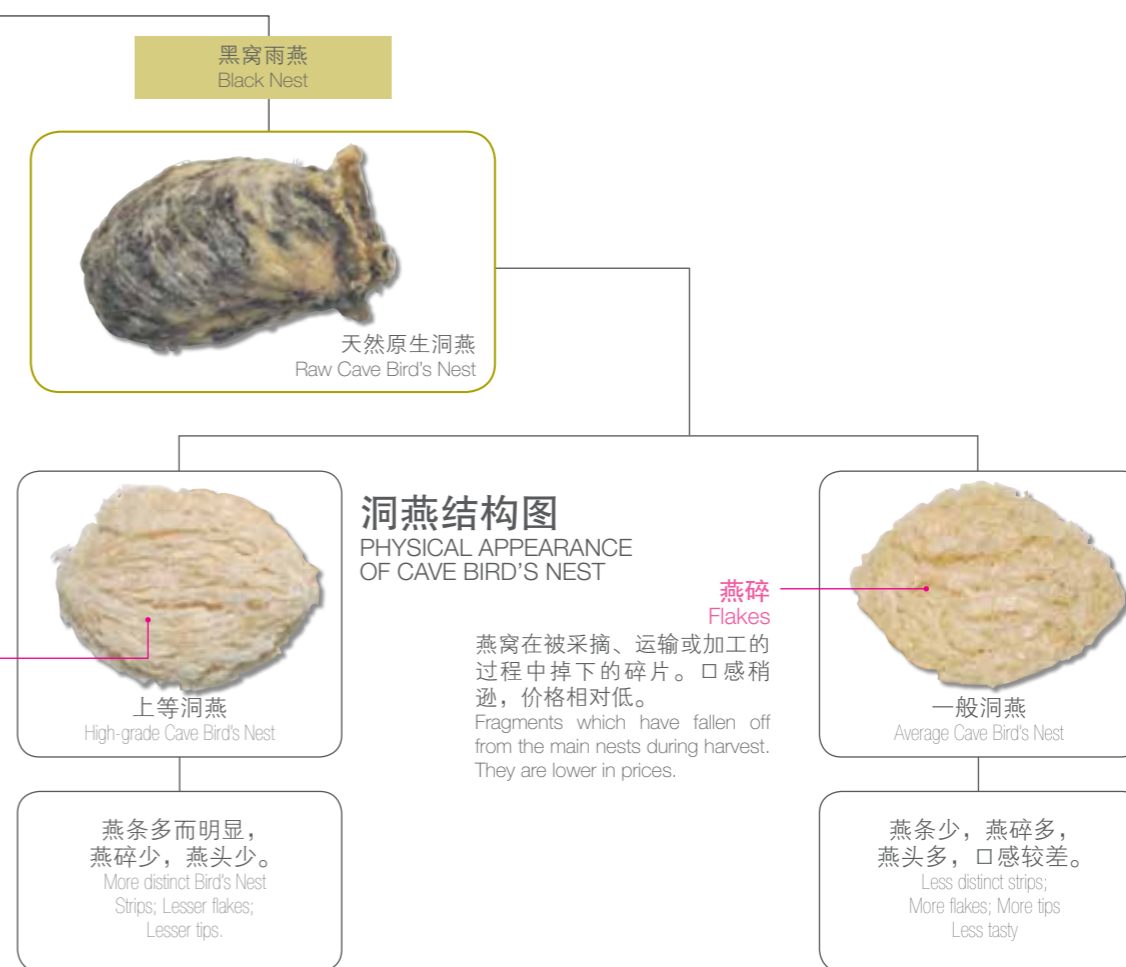


## 同样是燕窝，价格为何不同？

Why do Bird's Nests of similar appearances come in different prices?

燕窝价格的高低主要按燕窝的品种和个别品质而定。要辨别不同类别的官燕价格，首先要观察燕头的大小和燕网的厚度。上等官燕盏的价格较高，因为其燕头一般较小，杂质较少，成份较干净，而燕网较薄，口感细腻润滑；要辨别不同类别的洞燕价格，则要观察燕条以及燕碎的多寡。品质较好的洞燕，经过挑选组合之后，所含的燕条一般上数量较多以及更完整，而燕碎相对较少，口感因而较佳。

The quality of bird's nest affects its price. Higher grades of Imperial Bird's Nests tend to be more costly due to its less impurities and thinner nest lattice which offers a smoother taste. Higher grades of Cave Bird's Nests which contain a greater amount of intact strips and lesser flakes tend to taste better.





## 福華補品 品質的保证

福華補品于2006年在新加坡创立属于自己的食品加工厂，并荣获新加坡危害分析和关键控制点(HACCP)认证。福華保证燕窝营养价值的同时，也恪守最高的卫生标准。福華金牛牌燕窝于2010年，2011和2012年获新加坡农粮局(AVA)颁发的食品安全卓越奖。在2013年，福華冰糖燕窝更上一层楼，荣获食品安全铜奖。

### 冰糖燕窝的制作程序



1 员工细心检查和挑选每一块燕窝，去除当中的杂质，确保燕窝洁净，之后确定份量。  
Every bird's nest is hand-picked to check for impurities and cleansing.



2 燕窝瓶子经过机器的高温杀菌，确保瓶内符合卫生标准。  
Bottles are sterilized to ensure hygiene.



5 由机器从瓶中抽出空气，然后密封瓶盖。  
Bottles are sealed tightly in vacuum.



6 燕窝以及瓶子再次经过高温无菌处理，期间不使用防腐剂。  
The end-product is sterilized for the second time.



## HOCKHUA TONIC THE GUARANTEE OF QUALITY

Hockhua Tonic opened its first food manufacturing place in Singapore in 2006 and has been accorded the Singapore Hazard Analysis Critical Control Point (HACCP) certification for food safety. In 2010, 2011 and 2012, Hockhua's Golden Cow Bird's Nest has also been awarded the Food Safety Excellence award by the Agri-Food and Veterinary Authority (AVA). In 2013, we received the prestige Bronze award for the achieving 5 consecutive year of good grading.



### PRODUCTION OF BIRD'S NEST WITH ROCK SUGAR



3 员工亲自将燕窝装入瓶子。  
Bird's nest is poured manually into the bottle.



4 全自动灌装仪器把冰糖溶液灌入瓶中。  
Rock sugar syrup is added.



7 贴上福華标签，包装后即可上市。  
Hockhua label pasted and goods are delivered to retail outlets.



8 福華燕窝系列产品。  
Hockhua Bird's Nest Product Series.





## 福華洞燕系列产品

Hockhua Cave Bird's Nest Product Series

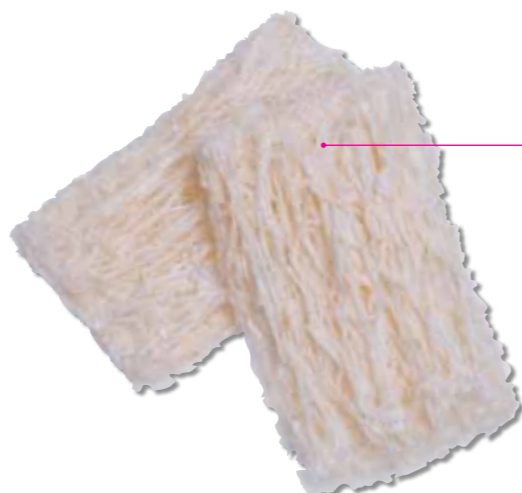


**洞燕片** 口感较爽口，微蛋白香味，普遍用于制作即食燕窝产品。

**Natural Cave Bird's Nest**  
Natural cave bird's nest is tastier, and has a slight fragrant smell of egg white. It is commonly used in instant bird's nest products.



燕碎



燕条



**金牛牌 冰糖燕窝**  
成份 采用洞燕碎制成。  
优点 价格经济，营养丰富。

**Golden Cow Brand BIRD NEST W/ ROCK SUGAR**  
Contains 100% Bird's nest fragments. Affordable price and rich in nutrients.



**金牛牌 特级冰糖燕窝**  
成份 采用洞燕中50%燕条，50%燕碎制成  
优点 燕窝较美观，送礼自备最佳选择。

**Golden Cow Brand SPECIAL GRADE BIRD'S NEST W/ ROCK SUGAR**  
Contains 50% bird's nest strip and fragments. Affordable price and rich in nutrients.



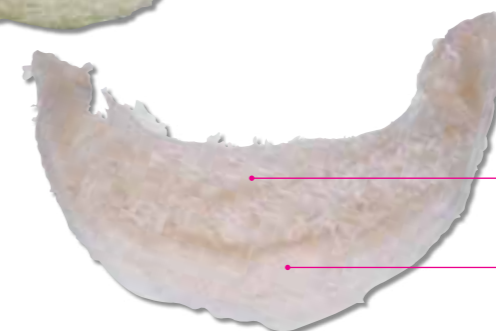
## 福華官燕盞系列产品

Hockhua Imperial Bird's Nest Product Series



**官燕盞** 较干净，燕碎少。味道浓郁，口感滑溜，营养价值最高。

**Imperial Bird's Nest**  
Less impurities and fragments. Fragrant and smoother taste. Contains the highest nutritional value.



燕网

燕条



**金牛牌 特级冰糖金丝官燕**  
成份 采用50%燕条，50%燕碎制成。

**Golden Cow Brand SUPER GRADE IMPERIAL GOLDEN BIRD'S NEST W/ ROCK SUGAR**  
Contains 50% bird's nest strips and 50% bird's nest fragments.



**福華精品 特级冰糖金丝官燕**  
成份 采用100%燕条制成，不含稳定剂口感润滑。

**Hockhua Specialties SUPER GRADE GOLDEN THREAD SWALLOW BIRD'S NEST W/ ROCK SUGAR**  
Contains 100% bird's nest strips. Smooth taste. Does not contain stabilizers.



**金牛牌 特级冰糖官燕羹**  
成份 浓缩燕窝。  
特色 保鲜、卫生、健康。  
建议 开瓶后在3至5天内喝完，以确保味道、卫生和营养价值保持最佳品质。

**Golden Cow Brand SUPER GRADE CONCENTRATED IMPERIAL BIRD'S NEST**  
Contains six 75g bottles of concentrated bird's nest. Fresh, Hygienic and Healthy. Each bottle Consume within 3 to 5 days to ensure freshness.

